

CPW Method

Version 1.0 – March 18, 2009

Copyright © 2009, Bernd J. Schneider All Rights Reserved

Abstract

The CPW (Cognitive Process Workflow) Method is a process method, a process modeling method and a workflow method. The CPW Process is represented in the form of simple sentence with subject, predicate and object. According to the CPW Process definition the process in the conventional sense is a Predicate. From now on the conventional process (predicate) is consequently put in the context of responsibility (subject) and process result (object), thus forming a CPW Process. The CPW Method - with CPW Process, CPW Dialog and CPW Workflow and in addition with CPW Context Diagrams (CPW Subject Context Diagram, CPW Object Context Diagram and CPW Subject Object Context Diagram) – can be applied to business areas of financial services (banking, assurance and financial approval), chemistry, pharmacy, medicine, transport, travel, politics, psychology, legal practice and other areas.

Status of the Document

CPW Method Version 1.0

Acknowledgements

The author/editor of the specification:

Bernd J. Schneider IC Informatica Consulting

(Bernd.Schneider@ICInformaticaConsulting.com)

Intellectual Property Rights & Copyright

Copyright © Bernd J. Schneider Zürich, March 18, 2009. All Rights Reserved.

Table of Contents

1.	CPW Method.....	4
1.1.	Overview of the CPW Method.....	4
2.	CPW Process.....	5
2.1.	The CPW Process represented as Simple Sentence.....	5
2.2.	The graphical representation of the CPW Process.....	6
3.	CPW Process, CPW Dialog and CPW Workflow.....	7
3.1.	CPW Process, CPW Dialog and CPW Workflow consisting of CPW Process Steps.....	7
3.2.	The graphical representation of the CPW Process, CPW Dialog and CPW Workflow.....	8
3.3.	CPW Dialog.....	9
4.	CPW Context Diagram.....	10
4.1.	CPW Context Diagram.....	10
5.	CPW Subject Context Diagram.....	10
5.1.	CPW Subject Context Diagram.....	10
5.2.	The graphical representation of the CPW Subject Context Diagram.....	11
6.	CPW Object Context Diagram.....	12
6.1.	CPW Object Context Diagram.....	12
6.2.	The graphical representation of the CPW Object Context Diagram.....	13
7.	CPW Subject Object Context Diagram.....	14
7.1.	CPW Subject Object Context Diagram.....	14
7.2.	The graphical representation of the CPW Subject Object Context Diagram.....	15

1. CPW Method

1.1. *Overview of the CPW Method*

The CPW (Cognitive Process Workflow) Method is subdivided into:

1. CPW Process
2. CPW Dialog
3. CPW Workflow
4. CPW Context Diagrams

The CPW Context Diagrams are subdivided into:

- 4.1 CPW Subject Context Diagram
- 4.2 CPW Object Context Diagram
- 4.3 CPW Subject Object Context Diagram

The CPW Method is with the CPW Process, the CPW Dialog and the CPW Workflow a process method, process modeling method and a workflow method and in addition belong to the CPW Method the CPW Context Diagrams with CPW Subject Context Diagram, CPW Object Context Diagram and the CPW Subject Object Context Diagram.

The CPW Method can be applied in different business areas as for example:

- financial services (banking, assurance and financial approval)
- chemistry
- pharmacy
- medicine
- transport
- travel
- politics
- psychology
- legal practice

Because of the reason that every process step with the CPW Process is represented in the form as simple sentence with subject, predicate and object, the CPW Process and CPW Method is simple and understandable and could also be an useful learning analytical method for Students and potentially also for pupils in learning the different subject areas.

2. CPW Process

2.1. *The CPW Process represented as Simple Sentence*

The CPW Process or CPW Process Step is represented as a Simple sentence with CPW Subject, CPW Predicate and CPW Object.

The following list of rules shows the rules for the Grammar, Syntax and Semantics of the CPW Process or CPW Process Step:

Rule 1. The CPW Process or CPW Process Step is represented as Simple Sentence with CPW Subject, CPW Predicate and CPW Object.

Rule 2. The CPW Process or CPW Process Step in the form of a Simple Sentence consists of the following phrases:

CPW Subject: Description of the subject (person, organizational unit or thing)

CPW Predicate: Description of the process (verb in the infinitive or conjugated)

CPW Object: Description of the object (sentence complement).

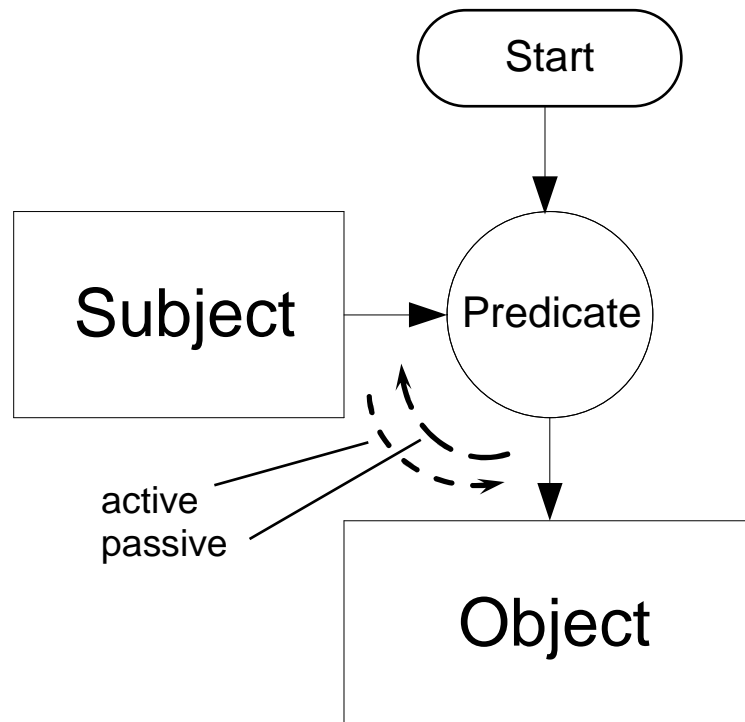
Rule 3. The CPW Process or CPW Process Step in the form of a sentence can be formed actively or passively.

Rule 4. According to the CPW Process definition the process in the conventional sense is a predicate.

From now on the conventional process (predicate) is consequently put in the context of a responsibility (subject) and a process result (object), thus forming a CPW Process.

2.2. *The graphical representation of the CPW Process*

The following **figures 1** shows the graphical representation of the CPW Process or CPW Process Step in the form of a Simple Sentence with CPW Subject, CPW Predicate and CPW Object.



CPW Subject – CPW Predicate – CPW Object

Fig. 1 shows the graphically represented CPW Process or CPW Process Step in the form of a Simple Sentence with CPW Subject, CPW Predicate and CPW Object.

3. CPW Process, CPW Dialog and CPW Workflow

3.1. CPW Process, CPW Dialog and CPW Workflow consisting of CPW Process Steps

The following list of rules shows the rules for the Grammar, Syntax and Semantics of the CPW Process, CPW Dialog and CPW Workflow:

Rule 1. The CPW Process, CPW Dialog or CPW Workflow consists of one to several Simple Sentences respectively CPW Processes or CPW Process Steps which are linked to one another. This means also that the CPW Process can be consists of only one CPW Process Step.

Rule 2. Several sentences respectively CPW Processes or CPW Process Steps can be linked sequentially, logically, iteratively or parallelly to a CPW Process or CPW Dialog or CPW Workflow.

Rule 3. Several CPW Processes or CPW Process Steps linked to one another form a CPW Process, CPW Dialog or a CPW Workflow

Rule 4. The CPW Processes or CPW Process Steps can be linked sequentially to a CPW Process, CPW Dialog or a CPW Workflow

Rule 5. After a CPW Process or a CPW Process Step there can be a logical operation due to a decision within a CPW Process, CPW Dialog or CPW Workflow.

Rule 6. Within a CPW Process, CPW Dialog or CPW Workflow there can be an iteration

Rule 7. Within a CPW Process, CPW Dialog or CPW Workflow a CPW Process or a CPW Process Step can be followed by one respectively several CPW Processes or CPW Process Steps parallelly.

Rule 8. The complexity of a business area can be distributed on several CPW Processes, CPW Dialogs.

Rule 9. A CPW Workflow consists of at least one CPW Process or CPW Dialog.

3.2. The graphical representation of the CPW Process, CPW Dialog and CPW Workflow

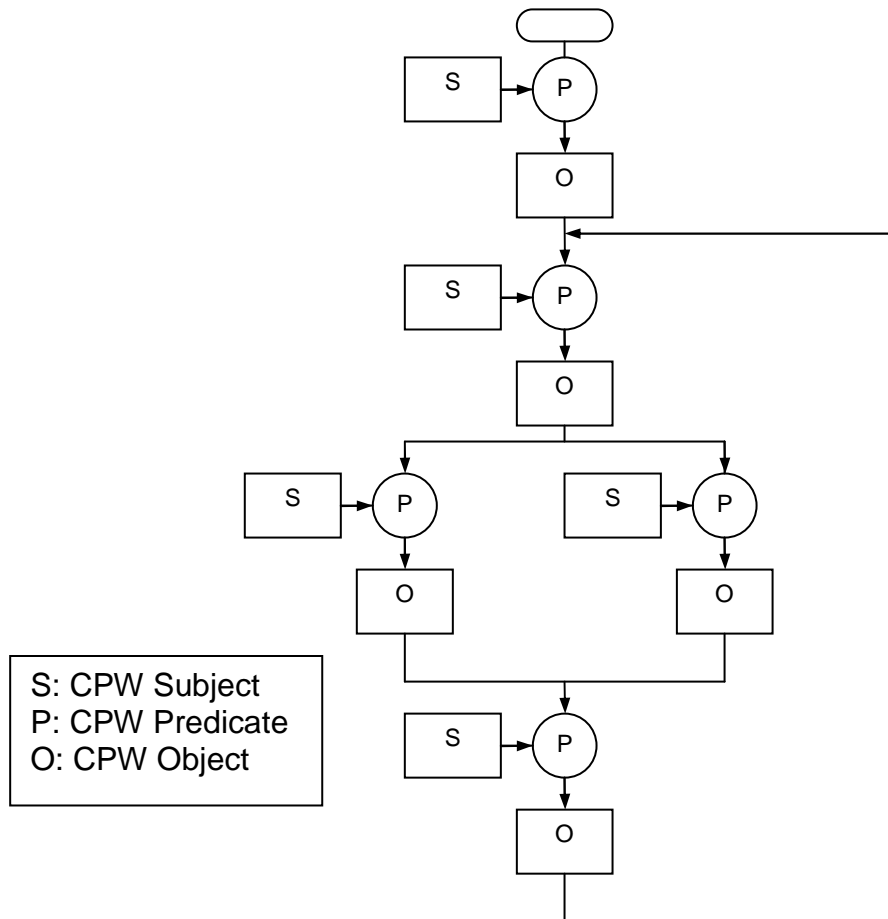


Fig. 2 shows the graphically represented CPW Processes, CPW Dialog or CPW Workflow.

3.3. *CPW Dialog*

The CPW Dialog can be interpreted as Dialog as follows:

- Dialog between people
- Dialog between Systems
- Dialog between people with interaction to system or machine
- Dialog between people and environment

The following list of rules shows the rules for the Grammar, Syntax and Semantics of the CPW Dialog:

Rule 1. Is the CPW Subject of the CPW Process Step of the CPW Dialog a person, or a speaking system, so the CPW Process Step with CPW Subject, CPW Predicate and CPW Object can contain the **Direct Speech** or **Reported Speech** of the dialog, it is the **CPW Dialog with Direct Speech** or the **CPW Dialog with Reported Speech**. The CPW Predicate in this case corresponds to a verb like for example: to say, to mean, to shout, to scream, to speak...

Rule 2. The CPW Dialog can contain **Direct Speech** or **Reported Speech** and in addition also the Content of a **CPW Process** or **CPW Workflow**.

4. CPW Context Diagram

4.1. *CPW Context Diagram*

The following chapters shows the different CPW Context Diagrams:

- CPW Subject Context Diagram
- CPW Object Context Diagram
- CPW Subject Object Context Diagram

5. CPW Subject Context Diagram

5.1. *CPW Subject Context Diagram*

The following list of rules shows the rules for the Grammar, Syntax and Semantics of the CPW Subject Context Diagrams:

Rule 1. Within a CPW Process, CPW Dialog, CPW Workflow each CPW Subject is represented as graphic object and all CPW Subjects are used to realize a CPW Subject Context Diagram.

Rule 2. Within a CPW Subject Context Diagram all CPW Subjects are graphically linked to one another given the fact that a connection between the respective subjects exists respectively makes sense.

Rule 3. Several CPW Subjects can be linked to one another by creating a new abstract CPW Subject. Thereby a hierarchy between the CPW Subjects can come into place within a CPW Subject Context Diagram.

5.2. The graphical representation of the CPW Subject Context Diagram

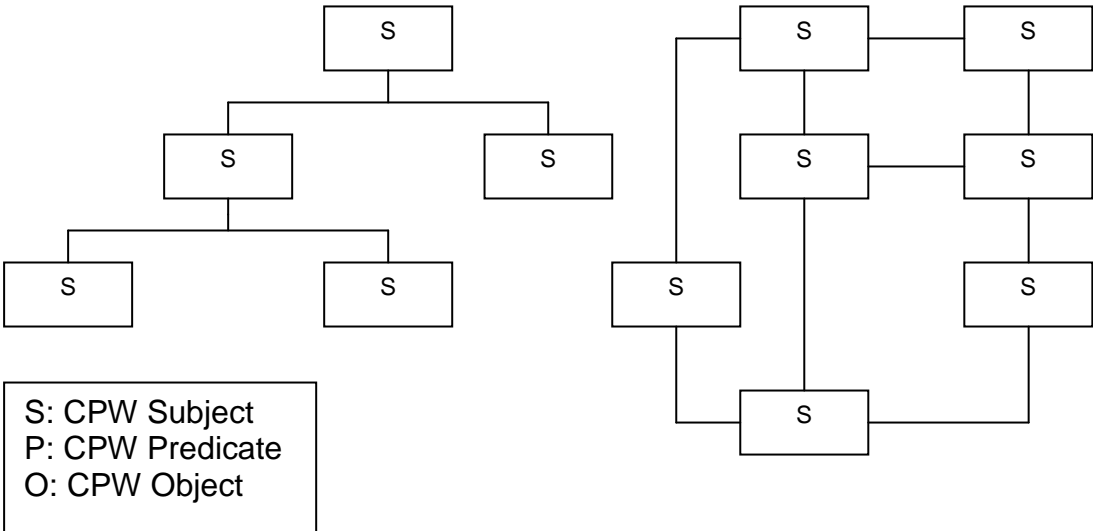


Fig. 3 shows a CPW Subject Context Diagram, which consists exclusively of CPW Subjects.

6. CPW Object Context Diagram

6.1. *CPW Object Context Diagram*

The following list of rules shows the rules for the Grammar, Syntax and Semantics of the CPW Object Context Diagrams:

Rule 1. Within a CPW Process, CPW Dialog, CPW Workflow each CPW Object is represented as graphical object and all CPW Objects are used to realize a CPW Object Context Diagram.

Rule 2. Within a CPW Object Context Diagram all CPW Objects are graphically linked to one another given the fact that a connection between the respective CPW Objects exists respectively makes sense.

Rule 3. Several CPW Objects can be linked to one another by creating a new abstract CPW Object. Thereby a hierarchy between the CPW Objects can come into place within a CPW Object Context Diagram.

6.2. The graphical representation of the CPW Object Context Diagram

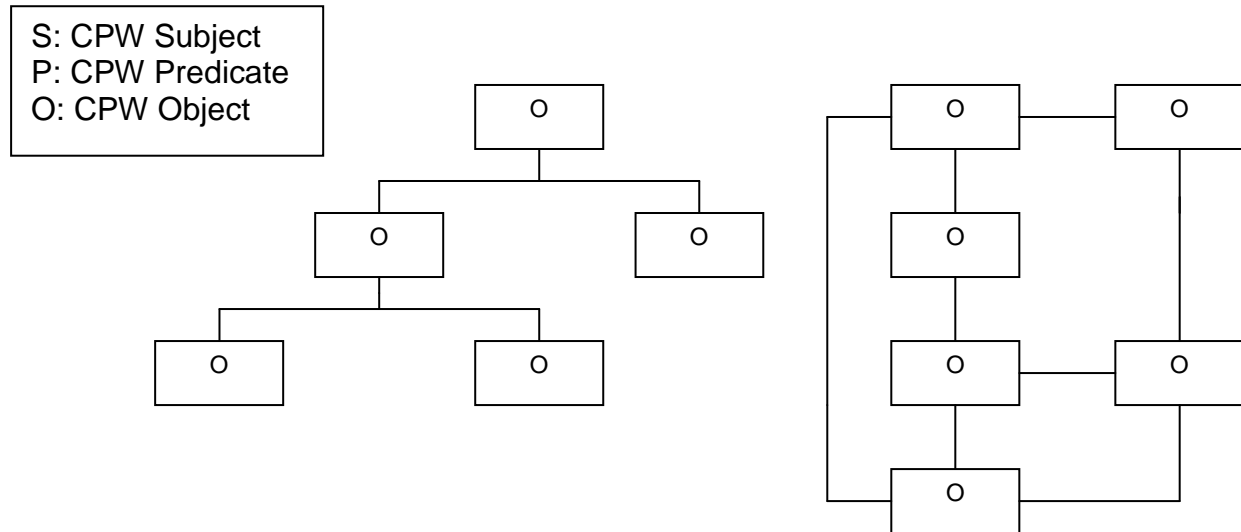


Fig. 4 shows a CPW Object Context Diagram, which consists exclusively of CPW Objects.

7. CPW Subject Object Context Diagram

7.1. *CPW Subject Object Context Diagram*

The following list of rules shows the rules for the Grammar, Syntax and Semantics of the CPW Subject Object Context Diagrams:

Rule 1. Within a CPW Process, CPW Dialog, CPW Workflow each CPW Subject and CPW Object is represented as graphical Object and all CPW Subjects and CPW Objects are used to realize a CPW Subject Object Context Diagram.

Rule 2. Within a CPW Subject Object Context Diagram all CPW Subjects and CPW Objects are graphically linked to one another given the fact that a connection between the respective objects exists respectively makes sense.

Rule 3. Several CPW Subjects and CPW Objects can be linked to one another by creating a new abstract object. Thereby a hierarchy between the CPW Subjects and CPW Objects can come into place within a CPW Subject Object Context Diagram.

7.2. The graphical representation of the CPW Subject Object Context Diagram

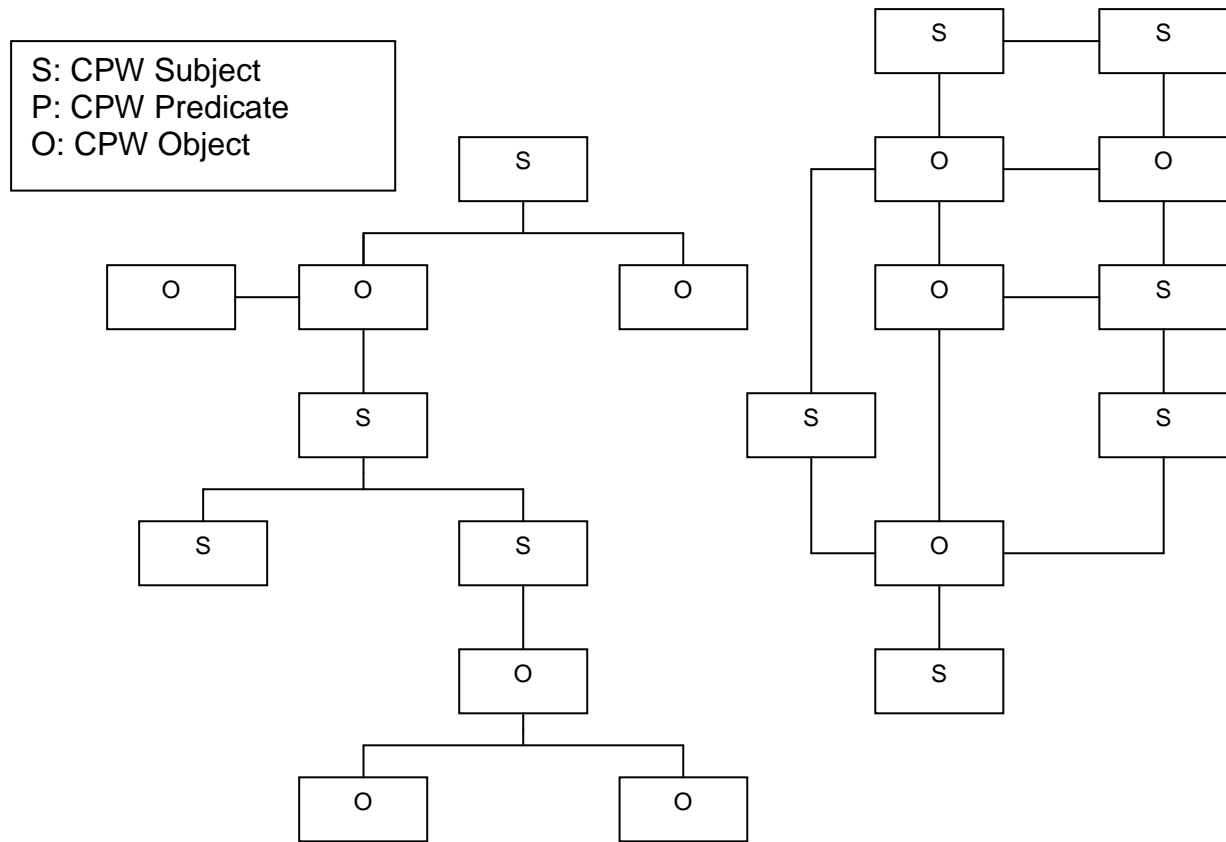


Fig. 5 shows a CPW Subject Object Context Diagram, which consists exclusively of CPW Subjects and CPW Objects.